

# Evac Demo Room



AFMG Technologies GmbH

Donnerstag, 14. April 2022

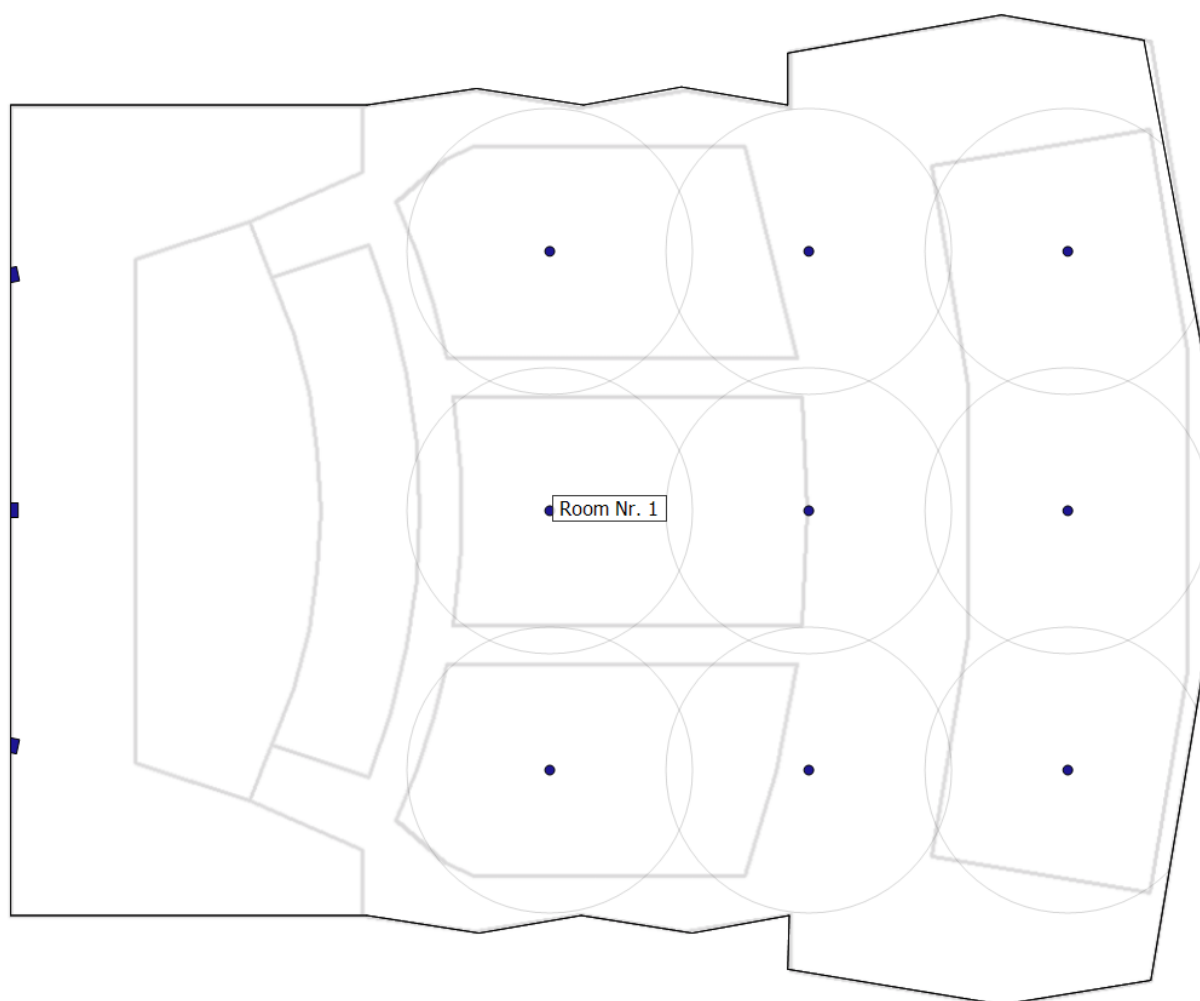
## Project Information

<b>Title:</b>	<b>Evac Demo Room</b>
<b>Author:</b>	
<b>Company:</b>	<b>AFMG Technologies GmbH</b>
<b>Notes:</b>	<b>Demo Project.</b>
<b>Temperature:</b>	<b>20,0°C</b>
<b>Pressure:</b>	<b>Standard (1010,0 hPa)</b>
<b>Humidity:</b>	<b>Standard (60%)</b>
<b>Mapping:</b>	<b>Direct SPL, Broadband</b>
<b>Input Signal Type:</b>	<b>Pink Noise (AES2 Broadband)</b>
<b>Calculation Accuracy:</b>	<b>Fast Approximation</b>

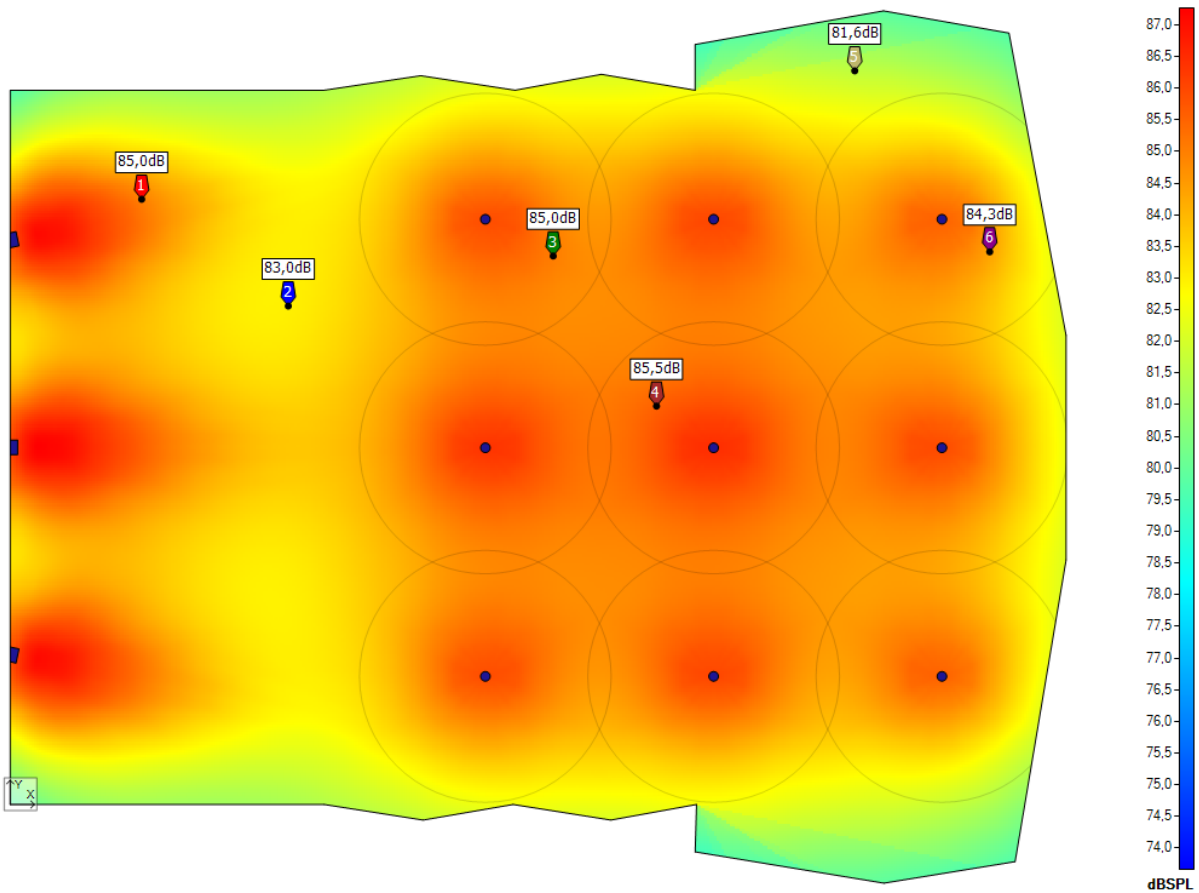
## Sound Sources Summary

<b>Amount</b>	<b>Type</b>
<b>12</b>	<b>Ceiling Lspk C (30 W, 70x70) (AFMG)</b>

## Layout Overview



## Room: Room Nr. 1



Label:	Room Nr. 1
Room Height:	8,00 m
Ear Height:	1,70 m
Network Voltage:	200 V
Power Consumption:	96W

### Sound Sources Summary

Amount	Type
12	Ceiling Lspk C (30 W, 70x70) (AFMG)

### Room Layout

Vertex Nr.	X [m]	Y [m]
1	0,00	0,00
2	11,00	0,00
3	14,47	-0,55
4	17,62	0,00
5	21,05	-0,55

6	24,05	0,00
7	24,00	-1,66
8	30,62	-2,75
9	35,21	-2,00
10	37,00	8,56
11	37,00	16,41
12	35,00	27,00
13	30,60	27,78
14	24,00	26,60
15	24,00	25,00
16	20,72	25,56
17	17,69	25,00
18	14,39	25,51
19	11,00	25,00
20	0,00	25,00

## Reverberation Time

Frequency Band	Reverberation Time (Eyring)
100	2,46 s
125	2,52 s
160	2,50 s
200	2,51 s
250	2,46 s
315	2,31 s
400	2,14 s
500	1,97 s
630	1,88 s
800	1,80 s
1000	1,78 s
1250	1,74 s
1600	1,70 s
2000	1,66 s
2500	1,63 s
3150	1,57 s
4000	1,47 s
5000	1,35 s
6300	1,19 s
8000	1,00 s

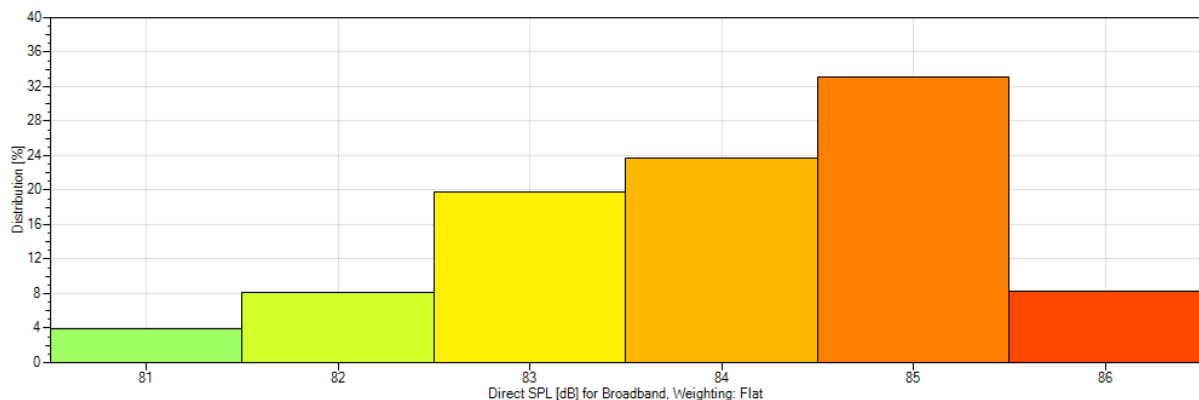
10000

0,80 s

## Sound Sources

Nr.	Mounting	Type	X [m]	Y [m]	Z [m]	Hor [°]	Ver [°]	Tap Settings
1	Ceiling	Ceiling Lspk C (30 W, 70x70)	16,65	20,48	8,00	0,0	-90,0	1 W (US Standard)
2	Ceiling	Ceiling Lspk C (30 W, 70x70)	24,65	20,48	8,00	0,0	-90,0	1 W (US Standard)
3	Ceiling	Ceiling Lspk C (30 W, 70x70)	32,65	20,48	8,00	0,0	-90,0	1 W (US Standard)
4	Ceiling	Ceiling Lspk C (30 W, 70x70)	16,65	12,48	8,00	0,0	-90,0	1 W (US Standard)
5	Ceiling	Ceiling Lspk C (30 W, 70x70)	24,65	12,48	8,00	0,0	-90,0	1 W (US Standard)
6	Ceiling	Ceiling Lspk C (30 W, 70x70)	32,65	12,48	8,00	0,0	-90,0	1 W (US Standard)
7	Ceiling	Ceiling Lspk C (30 W, 70x70)	16,65	4,48	8,00	0,0	-90,0	1 W (US Standard)
8	Ceiling	Ceiling Lspk C (30 W, 70x70)	24,65	4,48	8,00	0,0	-90,0	1 W (US Standard)
9	Ceiling	Ceiling Lspk C (30 W, 70x70)	32,65	4,48	8,00	0,0	-90,0	1 W (US Standard)
10	Wall	Ceiling Lspk C (30 W, 70x70)	0,00	5,25	4,00	-12,0	-7,9	1 W (US Standard)
11	Wall	Ceiling Lspk C (30 W, 70x70)	0,00	12,50	4,00	0,0	-8,0	1 W (US Standard)
12	Wall	Ceiling Lspk C (30 W, 70x70)	0,00	19,75	4,00	12,0	-8,0	1 W (US Standard)

## Distribution



<b>Average:</b>	<b>84,0 dB ±1,4</b>
<b>Average + Std. Dev.:</b>	<b>85,3 dB</b>
<b>Average - Std. Dev.:</b>	<b>82,6 dB</b>
<b>Data Points:</b>	<b>123728</b>

## Receivers

	X [m]	Y [m]
Receiver 1	4,60	21,18
Receiver 2	9,74	17,45
Receiver 3	19,03	19,20
Receiver 4	22,65	13,94
Receiver 5	29,59	25,68
Receiver 6	34,32	19,34

